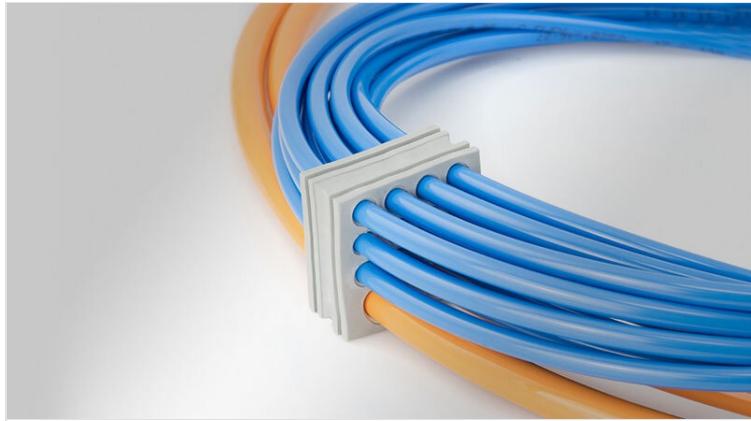


KT-DT | Multi-membrane cable grommets

for cable diameters 1 - 14.5 mm / IP54 / UL Type 12



The KT-DT cable grommets can be used anywhere where a large number of electrical, pneumatic or hydraulic lines must be routed and sealed with IP54. By using the KT-DT grommets, the cable density can be significantly increased.

KT-DT grommets are compatible with split icotek cable entry frames, such as [KEL-U](#), [KEL](#) and [KEL-FG](#). The routing of cables with and without preassembled connectors in one cable entry frame can thus be easily combined.

The KT-DT grommets are also perfectly suitable for the assembly of subsequently terminated cable harnesses.

[ST-B Plugs](#) can be used for sealing pierced membranes if cables have been removed.

IP54

UL TYPE
12

C_{RU}US

DNV

RIWA

HL3
EN 45545-2

E45
E130
EN 45545-3

ECOLAB
certified

UV
ISO 4892-2A

PNEUMATICS

RoHS
compliant

REACH
COMPLIANCE

Made in
Germany

Specifications

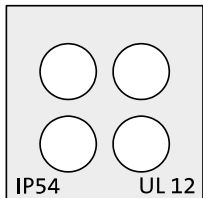
IP rating (EN 60529)	IP54
UL Type (UL 50E)	UL Type 12
Material	Elastomer
Flame class	UL94-V0, self-extinguishing
Operating temperature	-40 C° to 100 C°
Properties	silicone free, halogen free

Advantages & Benefits

- Enable routing of pre-terminated cables through cable entry frames and split cable glands
- High cable density
- Enables sub-assembly of cable harnesses

Product types & Sizes

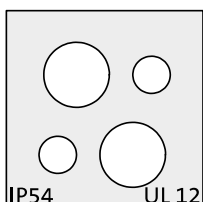
KT-DT 7



Part No.	41550
EAN	4251269319204
Package quantity	10
For max. no. of cables	4
Color	gray (similar RAL 7035)
Length	21 mm
Width	21 mm

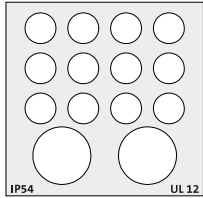
Height	19 mm
Mounting height	2 mm
For cable type	Round cable
Clamping range	4 x 1 - 6 mm

KT-DT 8



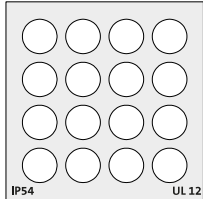
Part No.	41552
EAN	4251269319211
Package quantity	10
For max. no. of cables	4
Color	gray (similar RAL 7035)
Length	21 mm
Width	21 mm

Height	19 mm
Mounting height	2 mm
For cable type	Round cable
Clamping range	2 x 1 - 7 mm
	2 x 1 - 4 mm

KT-DT 1

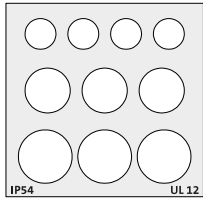
Part No. **41500**
 EAN **4251269307287**
 Package quantity **10**
 For max. no. of cables **14**
 Color **gray (similar RAL 7035)**
 Length **41,5 mm**
 Width **40,5 mm**

Height **19 mm**
 Mounting height **2 mm**
 For cable type **Round cable**
 Clamping range **12 x 1 - 6.5 mm**
2 x 1 - 12.2 mm

KT-DT 2

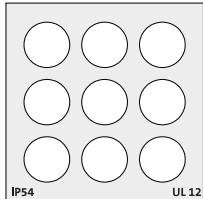
Part No. **41510**
 EAN **4251269307294**
 Package quantity **10**
 For max. no. of cables **16**
 Color **gray (similar RAL 7035)**
 Length **41,5 mm**
 Width **40,5 mm**

Height **19 mm**
 Mounting height **2 mm**
 For cable type **Round cable**
 Clamping range **16 x 1 - 7.1 mm**

KT-DT 3

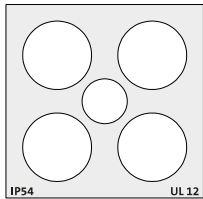
Part No. **41520**
 EAN **4251269307300**
 Package quantity **10**
 For max. no. of cables **10**
 Color **gray (similar RAL 7035)**
 Length **41,5 mm**
 Width **40,5 mm**

Height **19 mm**
 Mounting height **2 mm**
 For cable type **Round cable**
 Clamping range **4 x 1 - 6.5 mm**
3 x 1 - 9.5 mm
3 x 0 - 11.3 mm

KT-DT 4

Part No. **41530**
 EAN **4251269307317**
 Package quantity **10**
 For max. no. of cables **9**
 Color **gray (similar RAL 7035)**
 Length **41,5 mm**
 Width **40,5 mm**

Height **19 mm**
 Mounting height **2 mm**
 For cable type **Round cable**
 Clamping range **9 x 1 - 9.5 mm**

KT-DT 5

Part No. **41540**
 EAN **4251269319099**
 Package quantity **10**
 For max. no. of cables **5**
 Color **gray (similar RAL 7035)**
 Length **41,5 mm**
 Width **40,5 mm**

Height **19 mm**
 Mounting height **2 mm**
 For cable type **Round cable**
 Clamping range **4 x 1 - 14.5 mm**
1 x 1 - 9.5 mm