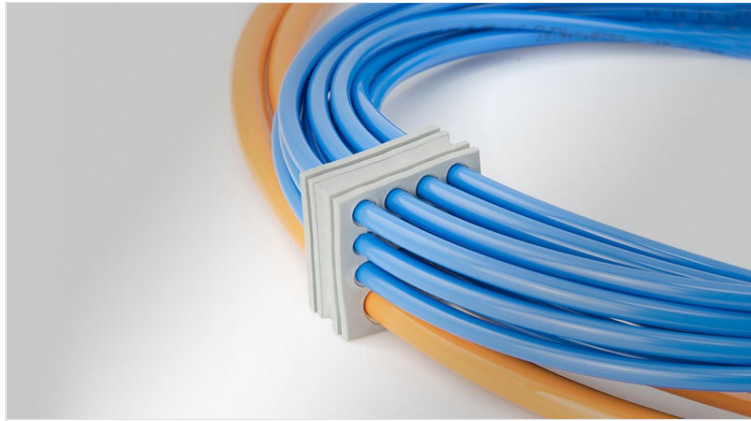


KT-DT | Multi-membrane cable grommets

for cable diameters 1 - 14.5 mm / IP54 / UL Type 12



The KT-DT cable grommets can be used anywhere where a large number of electrical, pneumatic or hydraulic lines must be routed and sealed with IP54. By using the KT-DT grommets, the cable density can be significantly increased.

KT-DT grommets are compatible with split icotek cable entry frames, such as [KEL-U](#), [KEL](#) and [KEL-FG](#). The routing of cables with and without preassembled connectors in one cable entry frame can thus be easily combined.

The KT-DT grommets are also perfectly suitable for the assembly of subsequently terminated cable harnesses.

[ST-B Plugs](#) can be used for sealing pierced membranes if cables have been removed.

IP54

UL TYPE
12

C_{RU} US

DNV

RIWA

HL3
EN 45545-2

E45
E130
EN 45545-3

ECOLAB
certified

UV
ISO 4892-2A

PNEUMATICS

RoHS
compliant

REACH
COMPLIANCE

Made in
Germany

Specifications

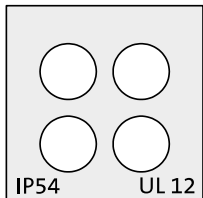
IP rating (EN 60529)	IP54
UL Type (UL 50E)	UL Type 12
Material	Elastomer
Flame class	UL94-V0, self-extinguishing
Operating temperature	-40 C° to 100 C°
Properties	silicone free, halogen free

Advantages & benefits

- Enable routing of pre-terminated cables through cable entry frames and split cable glands
- High cable density
- Enables sub-assembly of cable harnesses

Product types & sizes

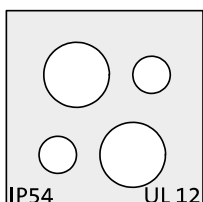
KT-DT 7



Part No.	41550
EAN	4251269319204
Package quantity	10
For max. no. of cables	4
Colour	grey (similar RAL 7035)
Length	21 mm
Width	21 mm

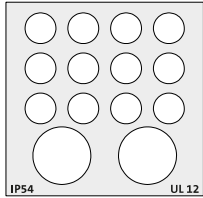
Height	19 mm
Mounting height	2 mm
For cable type	Round cable
Clamping range	4 x 1 - 6 mm
Clamping range	4 x 1 - 6 mm

KT-DT 8



Part No.	41552
EAN	4251269319211
Package quantity	10
For max. no. of cables	4
Colour	grey (similar RAL 7035)
Length	21 mm
Width	21 mm

Height	19 mm
Mounting height	2 mm
For cable type	Round cable
Clamping range	2 x 1 - 4 mm 2 x 1 - 7 mm
Clamping range	2 x 1 - 7 mm
Clamping range	2 x 1 - 4 mm

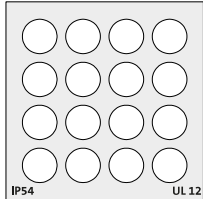
KT-DT 1

Part No.
EAN
Package quantity
For max. no. of cables
Colour
Length
Width

41500
4251269307287
10
14
grey (similar RAL 7035)
41,5 mm
40,5 mm

Height
Mounting height
For cable type
Clamping range
Clamping range

19 mm
2 mm
Round cable
12× 1 - 6,5 mm | 12× 1 - 12,2 mm
12 x 1 - 6.5 mm
2 x 1 - 12.2 mm

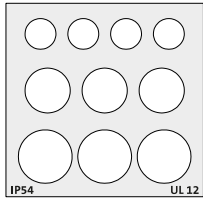
KT-DT 2

Part No.
EAN
Package quantity
For max. no. of cables
Colour
Length
Width

41510
4251269307294
10
16
grey (similar RAL 7035)
41,5 mm
40,5 mm

Height
Mounting height
For cable type
Clamping range
Clamping range

19 mm
2 mm
Round cable
16× 1 - 7,1 mm
16 x 1 - 7.1 mm

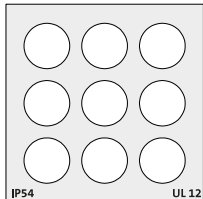
KT-DT 3

Part No.
EAN
Package quantity
For max. no. of cables
Colour
Length
Width

41520
4251269307300
10
10
grey (similar RAL 7035)
41,5 mm
40,5 mm

Height
Mounting height
For cable type
Clamping range
Clamping range

19 mm
2 mm
Round cable
4× 1 - 6,5 mm | 3× 1 - 9,5 mm
| 3× 1 - 11,3 mm
4 x 1 - 6.5 mm
3 x 1 - 9.5 mm
3 x 1 - 11.3 mm

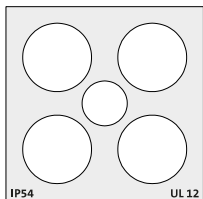
KT-DT 4

Part No.
EAN
Package quantity
For max. no. of cables
Colour
Length
Width

41530
4251269307317
10
9
grey (similar RAL 7035)
41,5 mm
40,5 mm

Height
Mounting height
For cable type
Clamping range
Clamping range

19 mm
2 mm
Round cable
9× 1 - 9,5 mm
9 x 1 - 9.5 mm

KT-DT 5

Part No.
EAN
Package quantity
For max. no. of cables
Colour
Length
Width

41540
4251269319099
10
5
grey (similar RAL 7035)
41,5 mm
40,5 mm

Height
Mounting height
For cable type
Clamping range
Clamping range

19 mm
2 mm
Round cable
1× 1 - 9,5 mm | 4× 1 - 14,5 mm
mm
4 x 1 - 14.5 mm
1 x 1 - 9.5 mm